

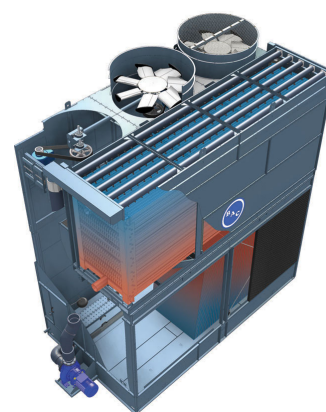
Construction details

Refrigerant condensers

Construction details

1. Material options

- Heavy-gauge hot-dip galvanized steel is used for external unit steel panels and structural elements featuring [Baltiplus Corrosion Protection](#).
- The unique [Baltibond hybrid coating](#) is an optional extra. A hybrid polymer coating for longer service life, applied pre-assembly to all hot-dip galvanized steel components of the unit.
- [Optional stainless steel](#) panels and structural elements of type 304L or 316L for extreme applications.
- Or the economical alternative: a **water-contact stainless steel cold water basin**. Its key components and the basin itself are stainless steel. The rest is protected with the Baltibond hybrid coating.

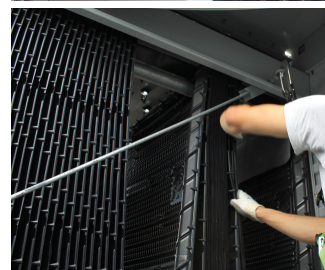


2. Heat transfer media

Unique and patented heat transfer system: featuring [combined flow](#) via heat exchange coil and fill pack.

Coil

- The coil is constructed of continuous length of prime surface steel, hot-dip galvanized after fabrication.
- Designed for maximum 23 bar operating pressure according to PED. Pneumatically tested at 34 bar.
- All hot dip galvanized and stainless steel coils are delivered with BAC's **Internal Coil Corrosion Protection**, to ensure an optimal internal corrosion protection and guaranteed quality.



Try our CXVE coil options:

- **Multiple circuit coils (split coils)** for your halo carbon refrigerants, maintaining individual compressor systems. Or use it for compressor jacket water or glycol cooling.
- **Stainless steel coils** are in type 304L or 316L.
- **High pressure coils** are designed for 28 bar operating pressure and pneumatically tested for 40 bar. Hot-dip galvanized after fabrication.

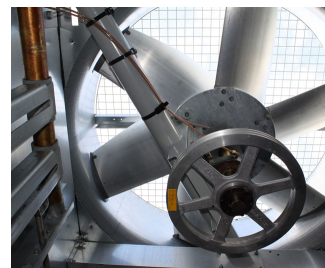
All coils are designed for low pressure drop with sloping tubes for free drainage of fluid.

Fill

- Patented [BACross II fill](#) with integrated **drift eliminators** certified by Eurovent. Its thermal performance is proven during comprehensive [lab thermal performance tests](#) and it offers you unrivalled system efficiency. The fill pack includes individual **sheets and a telescopic fill support**. Sheets are easy to inspect and clean inside the tower without dismantling, eliminating the need for frequent fill replacement.
- In self-extinguishing **plastic**, which will not rot, decay or decompose.

3. Air movement system

- **CXVE fan system** features two corrosion resistant sheaves, belt and motor. Together with the heavy duty fan shaft bearings and the BAC **Impervix** motor, this guarantees optimal and year-round operational efficiency.
- **Low kW and noise axial fan(s)** in corrosion resistant aluminum, encased in fan cylinder with removable fan guard. To reduce noise even further, choose for a **Whisper Quiet fan** with minimal impact on thermal performance.
- Our **drift eliminators** in the coil section come in UV-resistant plastic, which will not rot, decay or decompose and their performance is tested and **certified by Eurovent**. They are assembled in **easily handled and removable sections**, for optimal coil access.
- Easy removable UV-resistant plastic **combined inlet shields** at air inlet or optional at the top air inlet. Sunlight block to prevent biological growth in tower, air filter and water splash-out stop.



4. Water distribution system

These consist of:

- **Spray branches** with wide non-clog, plastic, 360° distribution nozzles secured in grommets. Overlapping spray pattern for complete coil wetting. A **sloped cold water basin** with:
 - large hinged and inward swinging **access** door
 - anti-vortexing **strainers** and **make up** both easily accessible from inside the unit.
- Close coupled, bronze fitted centrifugal **spray pump** with totally enclosed fan cooled (TEFC) motor. Bleed line with metering valve installed from pump discharge to overflow.



Need more information? Contact your local [BAC representative](#).