

Blade type

Spare parts guide

Blade type

Counter flow products feature **horizontally** installed blade type eliminators.

Cross flow products feature **vertically** installed blade type eliminators in the coil section.

Benefits

- Maximum drift capture through efficient design
- Light weight
- Easy to handle, lift and remove for inspection and servicing of water distribution system and heat transfer surface (fill and coil)
- Nested modules to guarantee watertight seam
- Corrosion-free
- Perfect fit: model specific kits
- Certified by Eurovent

We use **horizontal** blade type eliminators in

Open cooling towers: [VXT](#), [VTL-E](#), [RCT](#), IMT

Closed circuit cooling towers: [VXI](#), [VFL](#), [HFL](#), [PFE](#), [FXVE](#)

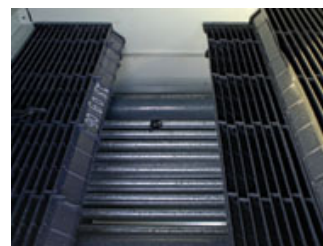
Evaporative condensers: [VXC](#), [VCL](#), [PCE](#), [CXVE](#)

We use **vertical** blade type eliminators in the coil section of

Closed circuit cooling towers: FXV, [FXV-D](#), [HXI](#)

Evaporative condensers: CXV, [CXV-D](#), [HXC](#)

Want to know more about BAC eliminators? Contact your local [BAC representative](#) for more information.



Downloads



- [BAC Original drift eliminators](#)
- [The SERVICE EXPERT for BAC Equipment](#)